

Your Agency



123 Dangerfield Drive Elmore Vale NSW

4 3 2

Available for lease is this 2-storey home which boasts a generous layout with multiple living zones for the whole family to enjoy!

Featuring a formal lounge/ media room, an open plan family/dining with a stunning contemporary kitchen showcasing sleek cabinetry, a walk-in pantry & stainless-steel appliance.

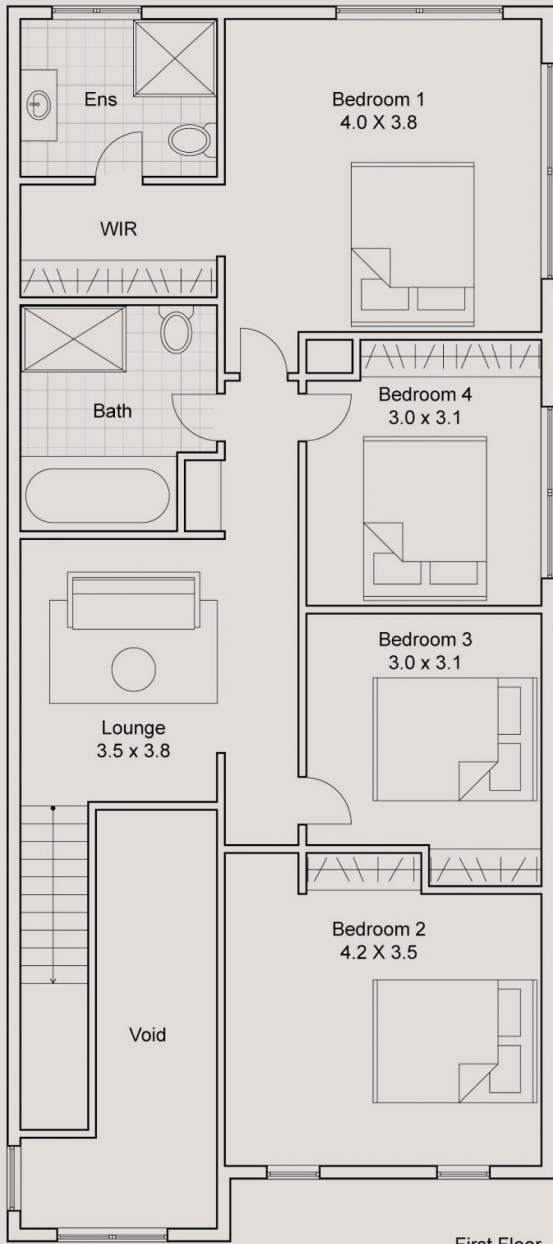
The luxurious master bedroom is the ultimate parent's retreat complete with large walk-in robe and ultra-modern ensuite. The rear of the home features sliding doors which offer instant flow onto the covered alfresco patio for effortless entertaining.

- Ducted air conditioning throughout & internal access from

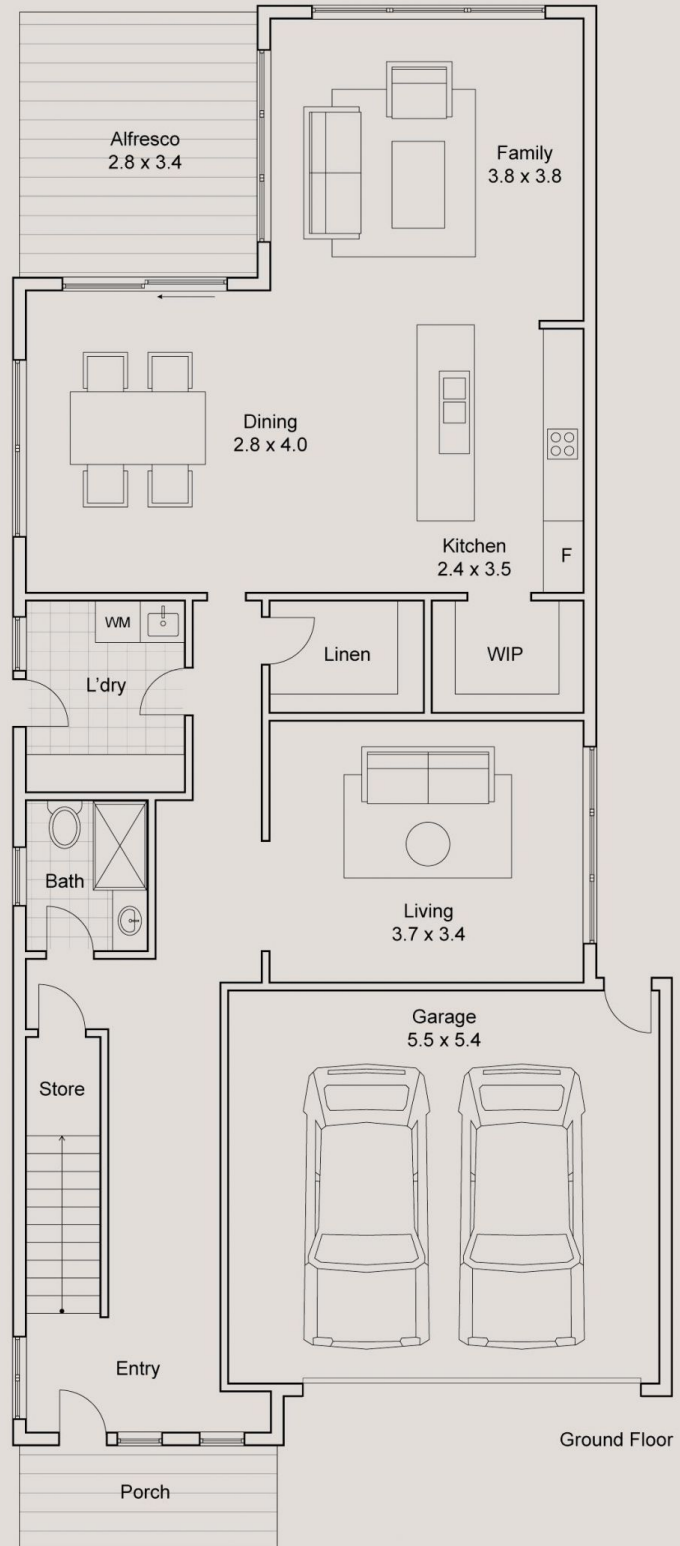
Building Size : 230 sqm
Land Size : 662 sqm
View : <https://www.youragency.net.au/lease/nsw/newcastle-region/elmore-vale/residential/house/8039288>



Chris Rousos
02 4023 8440



First Floor



Ground Floor