

Your Agency



4 Diamantina Place Wallalong NSW

4 2 6

Enjoy a laid-back lifestyle just minutes from Maitland at this tranquil country home where rural vistas meet space & style in a property that's perfect for growing families. Wake every morning to birdsong in the trees, let the kids play on the large expanses of lawn whilst entertaining in the multiple outdoor living areas.

This luxury Beechwood home features beautiful solid timber flooring throughout, as well as a brand kitchen, two new bathrooms and an immaculate 2 acre playground which makes this home the ultimate lifestyle package.

- Large light-filled formal & casual living and dining options
- Open-plan kitchen with walk in pantry adjoins a large informal family room
- Ensuite to the master suite features a large corner bath &

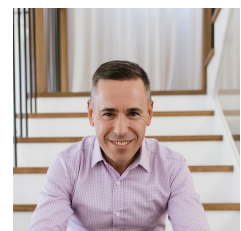
Price : \$ 1,080,000

Land Size : 8172 sqm

View : <https://www.youragency.net.au/sale/nsw/hunter-valley-lower/wallalong/residential/house/6408800>



David Caldwell
0408 525 362



Chris Rousos
02 4023 8440

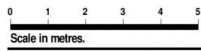


SITE PLAN (NOT TO SCALE)

Approx Internal Area - 230m²
 Approx Land Area - 8172m²

your agency

4 Diamantina Place, Wallalong



Floor and site plans are provided for marketing purposes only. Measurements are approximate and not to scale. Interested persons should rely on their own enquiries.

